

UK General Election 6th May 2010

Summary of results

Contents

Table 1: UK scoreboard	2
Table 2: % Share of the popular vote (UK).....	3
Figure 1: % Share of the popular vote (UK)	4
Table 3: % Share of seats (UK)	5
Figure 2: % Share of seats (UK) 1900-2010.....	6
Figure 3: Government Votes: Seats Ratio 1945-2010.....	7
Table 4: Government overall majority, 1900-2010.....	8
Figure 4: UK Electoral Turnout 1832-2010.....	9
Figure 5: Electoral system effects	10
Figure 6: May 6 th 2010 UK Election map.....	11

Table 1: UK scoreboard

Party	Seats	Gain	Loss	Net	Votes	%	+/-%
Conservative	306	100	3	+97	10,706,647	36.1	+3.8
Labour	258	3	94	-91	8,604,358	29.0	-6.2
Liberal Democrat	57	8	13	-5	6,827,938	23.0	+1.0
Democratic Unionist Party	8	0	1	-1	168,216	0.6	-0.3
Scottish National Party	6	0	0	0	491,386	1.7	+0.1
Sinn Fein	5	0	0	0	171,942	0.6	-0.1
Plaid Cymru	3	1	0	+1	165,394	0.6	-0.1
Social Democratic & Labour Party	3	0	0	0	110,970	0.4	-0.1
Green	1	1	0	+1	285,616	1.0	-0.1
Alliance Party	1	1	0	+1	42,762	0.1	+0.0
UK Independence Party	0	0	0	0	917,832	3.1	+0.9
British National Party	0	0	0	0	563,743	1.9	+1.2
Ulster Conservatives and Unionists - New Force	0	0	1	-1	102,361	0.3	-0.1
English Democrats	0	0	0	0	64,826	0.2	+0.2
Respect-Unity Coalition	0	0	1	-1	33,251	0.1	-0.1
Traditional Unionist Voice	0	0	0	0	26,300	0.1	
Christian Party	0	0	0	0	18,623	0.1	
Independent Community and Health Concern	0	0	1	-1	16,150	0.1	+0.0
Trade Unionist and Socialist Coalition	0	0	0	0	12,275	0.0	
Scottish Socialist Party	0	0	0	0	3,157	0.0	-0.1
Others	1	1	1	0	319,891	1.1	0.0
Turnout					29,653,638	65.1	4.0

Note: After 649 of 650 seats declared.

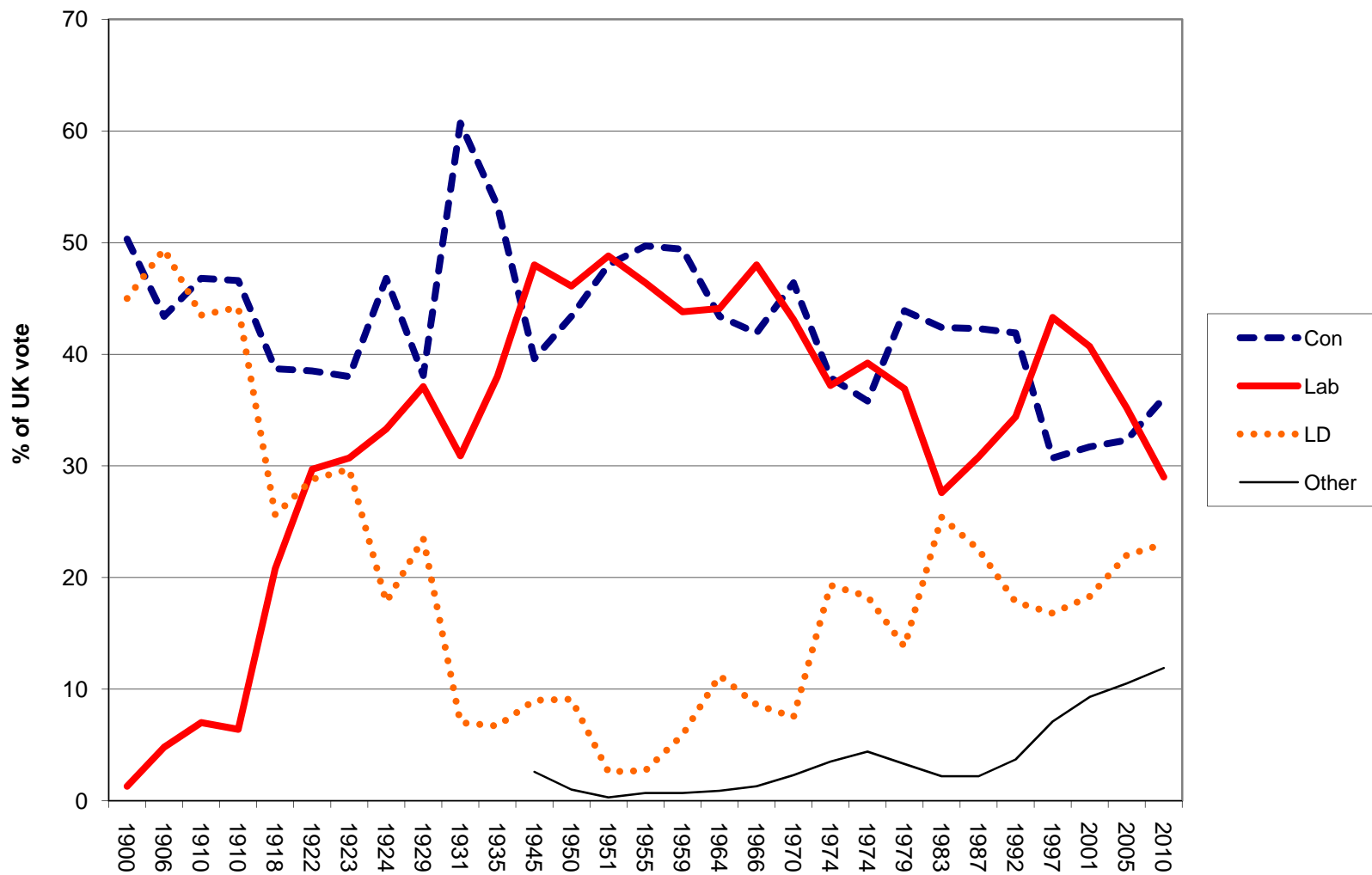
Source: news.BBC.co.uk

Table 2: % Share of the popular vote (UK)

	Con	Lab	LD	Other
1900	50.3	1.3	45.0	2.5
1906	43.4	4.8	49.4	
1910	46.8	7.0	43.5	
1910	46.6	6.4	44.2	
1918	38.7	20.8	25.6	
1922	38.5	29.7	28.8	
1923	38.0	30.7	29.7	
1924	46.8	33.3	17.8	
1929	38.1	37.1	23.5	
1931	60.7	30.9	7.0	
1935	53.3	38.0	6.7	
1945	39.6	48.0	9.0	2.6
1950	43.4	46.1	9.1	1.0
1951	48.0	48.8	2.6	0.3
1955	49.7	46.4	2.7	0.7
1959	49.4	43.8	5.9	0.7
1964	43.4	44.1	11.2	0.9
1966	41.9	48.0	8.6	1.3
1970	46.4	43.1	7.5	2.3
1974	37.9	37.2	19.3	3.5
1974	35.8	39.2	18.3	4.4
1979	43.9	36.9	13.8	3.3
1983	42.4	27.6	25.4	2.2
1987	42.3	30.8	22.5	2.2
1992	41.9	34.4	17.8	3.7
1997	30.7	43.3	16.8	7.1
2001	31.7	40.7	18.3	9.3
2005	32.3	35.2	22.0	10.5
2010	36.1	29.0	23.0	11.9
Change 2005-10	+3.8	-6.2	+1.0	+1.4

Source: Colin Rallings and Michael Thrasher. 2000. *British Electoral Facts 1832-1999* Ashgate; updated

Figure 1: % Share of the popular vote (UK)



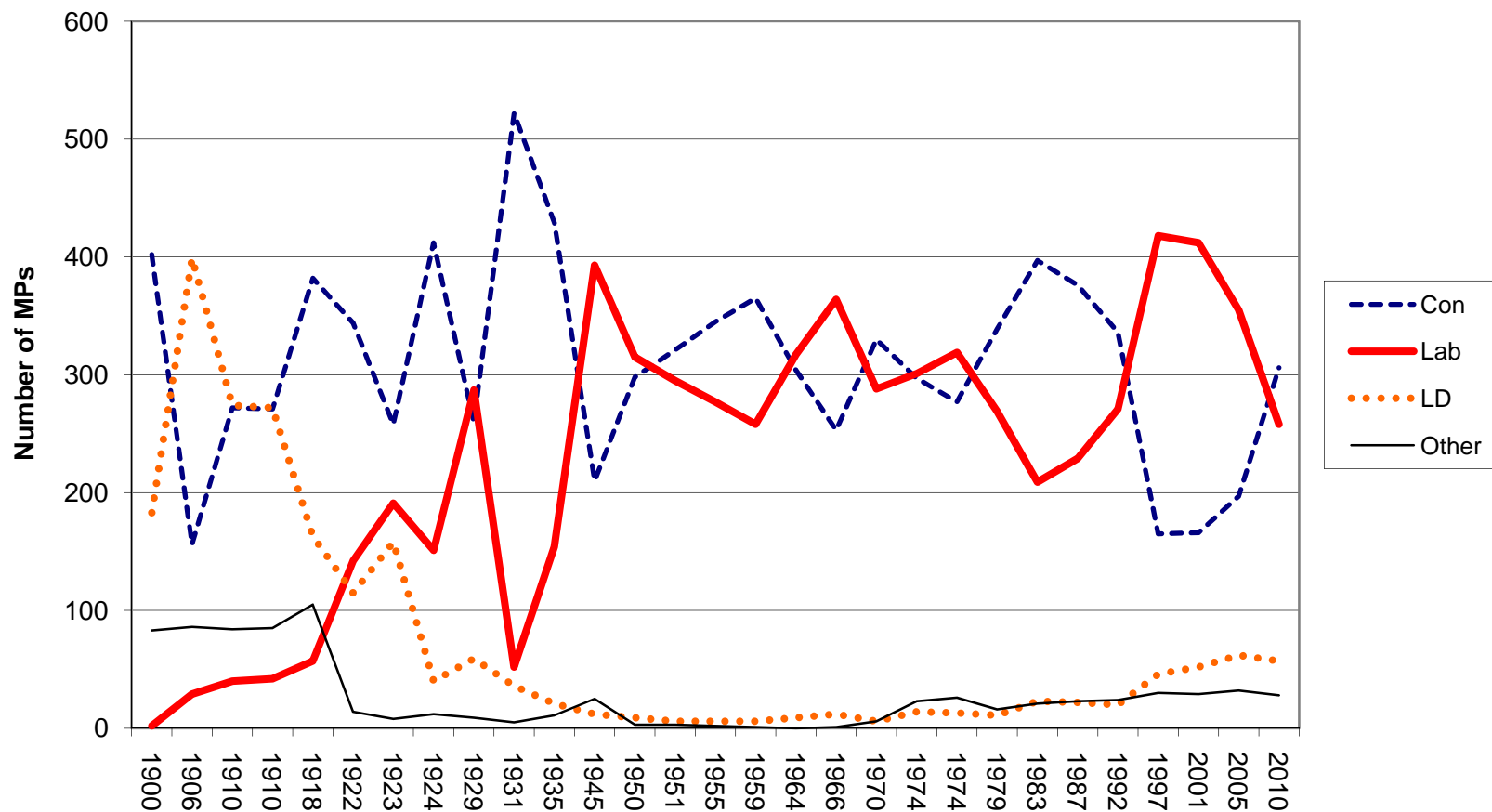
Source: Colin Rallings and Michael Thrasher. 2000. *British Electoral Facts 1832-1999* Ashgate; updated.

Table 3: % Share of seats (UK)

	Con	Lab	LD	Other	Total
1900	402	2	183	83	670
1906	156	29	399	86	670
1910	272	40	274	84	670
1910	271	42	272	85	670
1918	382	57	163	105	707
1922	344	142	115	14	615
1923	258	191	158	8	615
1924	412	151	40	12	615
1929	260	287	59	9	615
1931	522	52	36	5	615
1935	429	154	21	11	615
1945	210	393	12	25	640
1950	298	315	9	3	625
1951	321	295	6	3	625
1955	345	277	6	2	630
1959	365	258	6	1	630
1964	304	317	9	0	630
1966	253	364	12	1	630
1970	330	288	6	6	630
1974	297	301	14	23	635
1974	277	319	13	26	635
1979	339	269	11	16	635
1983	397	209	23	21	650
1987	376	229	22	23	650
1992	336	271	20	24	651
1997	165	418	46	30	659
2001	166	412	52	29	659
2005	197	355	62	32	646
2010	306	258	57	28	649
Change	97	-91	-5	-4	

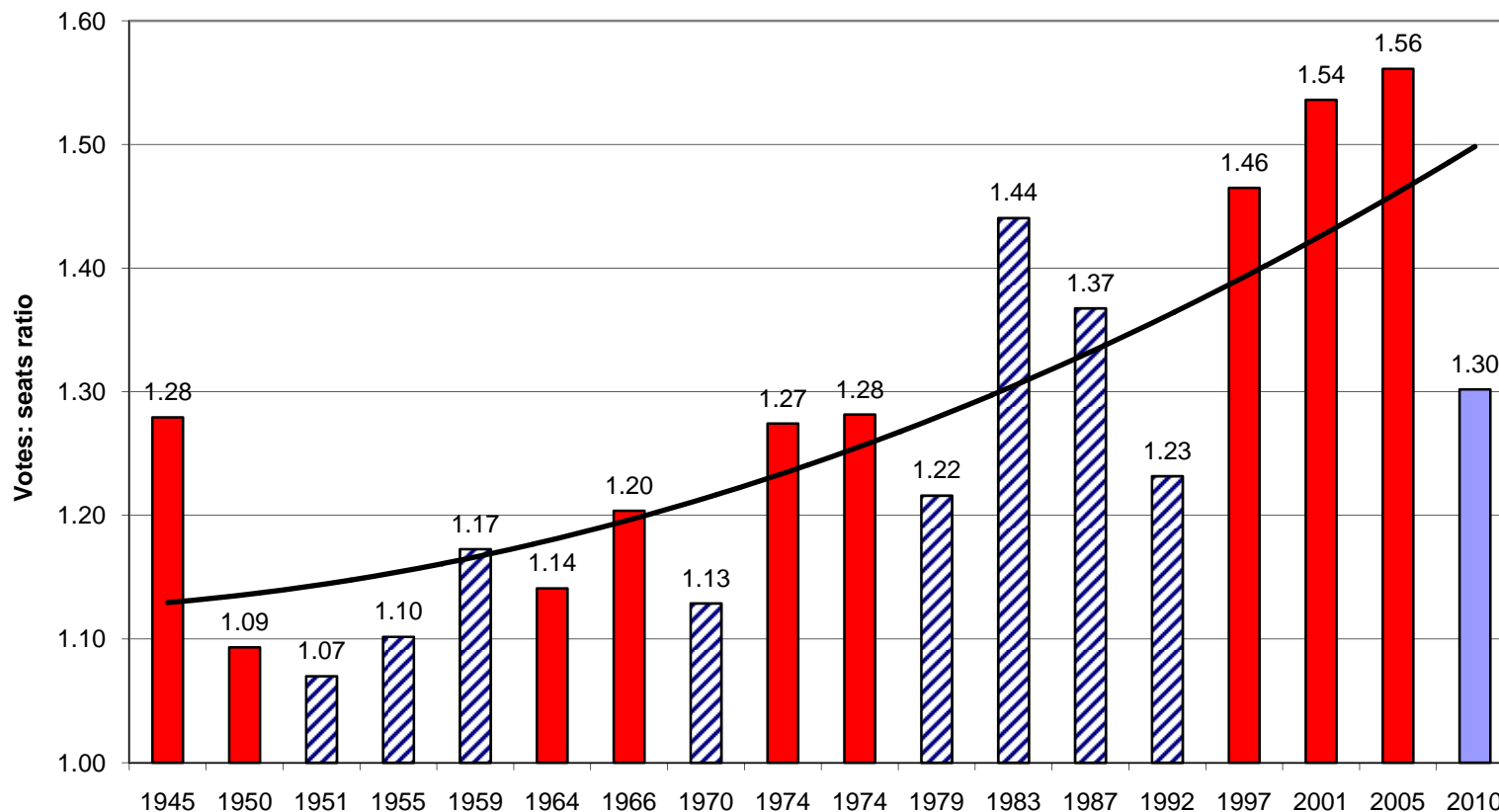
Source: Colin Rallings and Michael Thrasher. 2000. *British Electoral Facts 1832-1999* Ashgate; updated.

Figure 2: % Share of seats (UK) 1900-2010



Source: Colin Rallings and Michael Thrasher. 2000. *British Electoral Facts 1832-1999* Ashgate; updated.

Figure 3: Government Votes: Seats Ratio 1945-2010



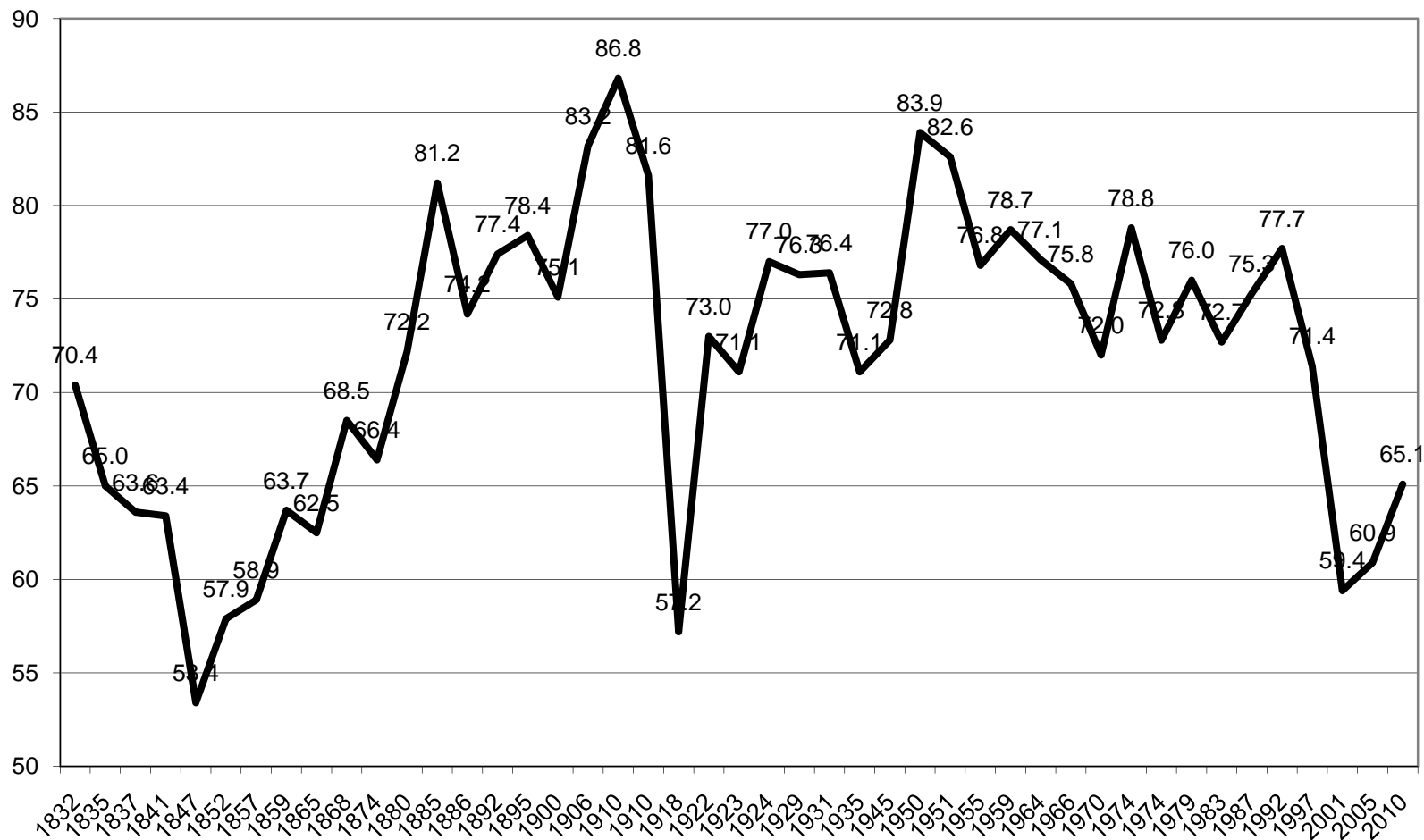
Note: Calculated by % votes/% seats for the governing party. 2010 is estimated based on the assumption of a Conservative government

Table 4: Government overall majority, 1900-2010

	Overall Maj	Govnt	
1900	135	Con	Salisbury/Balfour
1906	129	Lib	Campbell Bannerman
1910		None	Asquith
1910		None	Asquith
1918	283	Coalition	Lloyd George
1922	74	Con	Bonar Law
1923		None	Baldwin
1924	210	Con	MacDonald
1929		None	MacDonald
1931	492	Nat	MacDonald
1935	242	Nat	Baldwin/Chamberlain/Churchill
1945	147	Lab	Attlee
1950	6	Lab	Attlee
1951	16	Con	Churchill
1955	59	Con	Eden/Macmillan
1959	99	Con	Macmillan/Douglas-Home
1964	5	Lab	Wilson
1966	97	Lab	Wilson
1970	31	Con	Heath
1974	0	Lab	Wilson
1974	4	Lab	Wilson/Callaghan
1979	44	Con	Thatcher
1983	144	Con	Thatcher
1987	101	Con	Thatcher
1992	21	Con	Major
1997	178	Lab	Blair
2001	167	Lab	Blair
2005	66	Lab	Blair/Brown
2010		None	Cameron?

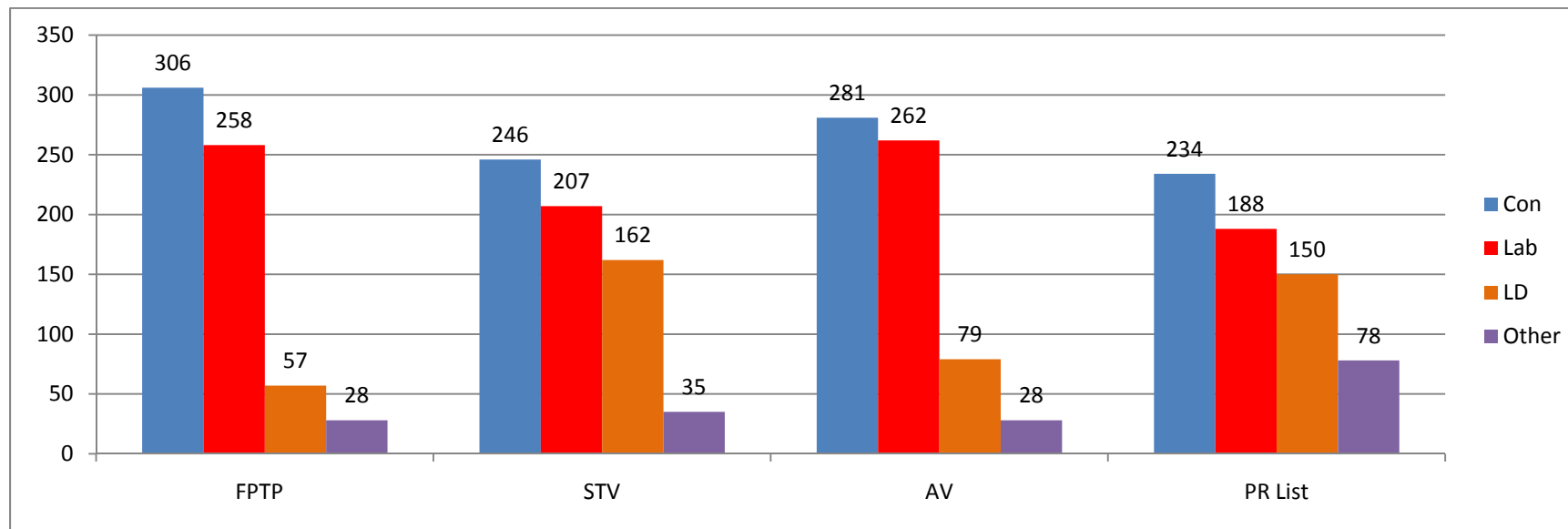
Source: Colin Rallings and Michael Thrasher. 2000. *British Electoral Facts 1832-1999* Ashgate; updated.

Figure 4: UK Electoral Turnout 1832-2010



Source: Colin Rallings and Michael Thrasher. 2000. *British Electoral Facts 1832-1999* Ashgate; updated.

Figure 5: Electoral system effects



	Con	Lab	LD	Other
FPTP	306	258	57	28
AV	281	262	79	28
STV	246	207	162	35
PR List	234	188	150	78

Note: Estimated number of seats under the 6th May 2010 share of vote, assuming no change in the distribution of votes and no legal electoral threshold.

Source: Estimates for AV and STV (with 3-5 MPs). Electoral Reform Society. May 10th 2010. "STV & the parliament that might have been.."

<http://www.electoral-reform.org.uk/news.php?ex=0&nid=469>

Figure 6: May 6th 2010 UK Election map

